



six degrees
flooring surfaces™

931 South Springville Avenue • Fostoria, Ohio 44830
844.432.5885

sixdegreesflooring.com
a division of the Roppe Holding Company

You can find us on...



six degrees
flooring surfaces™
a division of the Roppe Holding Company

YOU'RE JUST A FEW STEPS AWAY

Welcome to the exciting world of Six Degrees Flooring Surfaces™. When you select a floor from Six Degrees, you can rest assured you have selected one made from the highest quality, locally-sourced raw materials in a state-of-the-art, family-owned factory, right here in the USA. Our products are both durable and beautiful, and we take great pride in providing our customers with the best possible service and care. Innovative production technology, superior wear and scratch resistance, and our commitment to both you, our customer, and the environment are what set us apart from the rest. American made. American served.

You're just a few steps away from the high quality and high style of Six Degrees Flooring Surfaces™.

o Table of Contents

- 3. Why Six Degrees?
- 5. Premium Construction
- 7. Sustainability
- 9. Radius Collection
- 11. Radius Colors
- 13. Radius 2.0 and DeGradus
- 15. Crossover Chart for Radius / 2.0 / DeGradus
- 17. Compass Collection
- 21. Compass Colors Collection
- 23. Impression Collection
- 25. Packing Data / Specifications
- 27. Excelsior / Installation Maintenance



* Cover Product Images
Large Photo: CP236_C15 Denver
Small Photo: RP401_C35 Nichols Oak

20RP534_C08 Dashwood

IMPRESSION



RADIUS



COMPASS - COMPASS COLOR



Why Six Degrees?

At Six Degrees Flooring Surfaces™, we take great pride in providing our customers with the highest quality, American made luxury vinyl tile & plank. Great care is taken throughout our production process to ensure a safe and sustainable flooring product; one that meets a variety of needs and aesthetics.

- Designer Inspired
- Readily Available
- Highly Durable
- Low Maintenance
- Eco Friendly
- Easy Installation

RADIUS 2.0



DeGradus



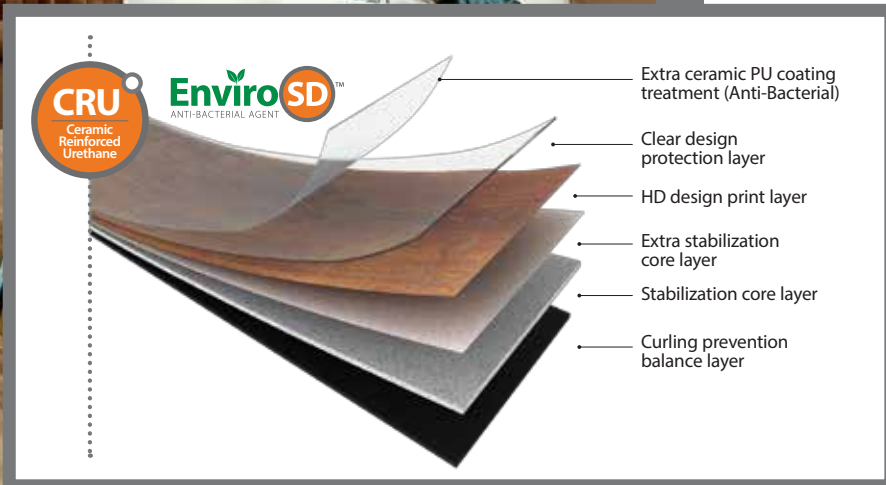
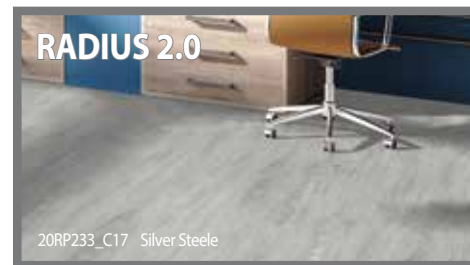
○ Premium Construction

Construction matters. Our attention to detail matters. We use only the highest quality virgin raw materials in the manufacturing of our dry back / glue down luxury vinyl plank and tile products. From our heat resistant backings to our durable wear layers, each component is carefully produced to ensure high performance and dimensional stability. No matter the application or budget, we have a product for you; and best of all, our products are all made and inventoried in our U.S. manufacturing facility located in Fostoria, Ohio.



RP545_C01 Myers Court





○ Sustainability

At Six Degrees, we are dedicated to the environment and work tirelessly to provide LVT products that are not only beautiful, but durable and eco-friendly, as well. We are proud to be a strong environmental steward and continue to work to improve upon our sourcing and production practices, offering additional satisfaction that you have selected a floor with the environment in mind.

Our Story...

It began almost 15 years ago when senior managers from the Roppe Holding Company were introduced to Nox Corporation LVT/P from South Korea. Their high quality and aesthetics impressed the RHC team, who was looking to provide their customers with a durable LVT/P flooring option. For several years, a working relationship grew between the two companies as RHC purchased flooring products made in their Korean facilities. In 2014, an opportunity to manufacture these products in the U.S. became reality...an empty factory was found, equipment was installed, staff was hired, and Nox Corporation had a partner in RHC and a new U.S. operation in Fostoria, Ohio.



Fast forward two years to April of 2016, and the Six Degrees brand was born... launched to the North American market with Made in the USA LVT/P products. In 2017, Sustainable Purchasing Leadership Council (SPLC) recognized the RHC/ Six Degrees effort with a Case Study Award on this collaborative work to onshore an international supplier.

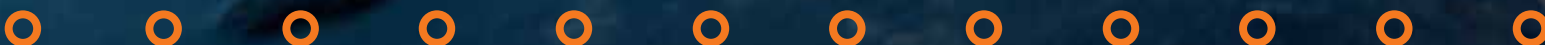
Our Products...

We know it looks odd to say “no recycled content” in the LVT/P business, but that is how our products are made; with only the highest quality virgin materials, including limestone, PVC resin, non-phthalate plasticizers, films, and superior wear finishes. We know from Healthy Building Network* studies that a wide variety of ingredients have been used in vinyl flooring in the past... but that’s not how we operate. Our materials are sourced in the USA, most of them regionally, and are free of asbestos, heavy metals and other chemicals of concern that can be introduced to new vinyl products through “recycled materials.”

**To learn more about recycling concerns in flooring, see Healthy Building Network studies (California 2005)*



Six Degrees LVT meets the toughest emissions test we have in the USA, the GREENGUARD Gold Certification standard by Underwriters Laboratory. In this test, our products spend two weeks in a small chamber with airflow simulating that of an office or education environment. Exiting air is filtered and the material filtered is analyzed for volatile organic compounds, commonly know as VOCs. VOC levels need to be 1/3 to 1/10th of the threshold limit values to pass the GREENGUARD Gold Certification standard.





An Environmental Product Declaration (EPD) is available for our glue down LVT/P flooring products. An EPD ensures transparency in the composition of our products, how they are manufactured, and how they go to market. You, as the customer, can rest well knowing you are selecting a flooring product free of contaminants and harmful chemicals...one that is manufactured in the USA using regionally sourced raw materials, and once produced, a product that ships from our warehouse to your door.

The Six Degrees of Sustainability...

- Our floors are 100% recyclable after use, which means even when your life with the floor is complete, a new product can be created...and that means less waste in landfills.
- Proudly manufactured in the USA. Less transport and fuel costs are needed to get your new flooring to you, our valued customer.
- Our products do not require an additional finish, which means less chemicals, less water and less energy are needed to maintain them and keep them looking beautiful.
- Six Degrees uses only 100% virgin vinyl materials. There is no recycled content and therefore no need to worry about contaminants in your flooring.
- Only non-phthalate plasticizers are used in the production of our floors. Six Degrees was the first in the industry to make this important change.

.....

ENVIRONMENTAL PRODUCT DECLARATION®

is available at
sixdegreesflooring.com

.....



.....

For additional room scene images of all Six Degrees products, please visit **sixdegreesflooring.com**, click on the product page to view colors & room scene options.

.....



Radius™ COLLECTION

The Radius™ Collection offers a wide selection of wood and stone visuals to fit any aesthetic need. It is the ideal flooring product for a variety of applications, including, but not limited to, corporate and medical office spaces, retail and residential. And now with our NEW Radius 2.0 20 mil format, you have even more options to meet your design needs. Our durable wear layer topped with a UV-cured ceramic-reinforced polyurethane finish provides maximum durability while ensuring long lasting beauty without the use of an on-site finish. Proudly made in the USA, the Radius™ Collection is produced and inventoried for quick turnaround times. With a variety of complementary color selections and patterns, you're just a few steps away from durability and beauty in one affordably priced package.



The Six Degrees of **Radius™** VINYL FLOORING

- A designer-inspired palette of colors and patterns, all at a single price point
- Enhanced performance and durability made possible by the addition of our Ceramic Reinforced Urethane (CRU)
- A lower-maintenance flooring option which does not require a finish
- An eco-friendly product made from locally sourced raw materials
- Simple glue down installation allows for greater pattern/design flexibility
- Readily available...made and inventoried in the USA!

With a variety of style options and the eco-friendly nature of Radius™, you're just a few steps away from *a floor that delivers the utmost in design and performance.*

FEATURES

- Easy to Maintain
- Qualifies for LEED® Credits
- GREENGUARD Gold® Certification
- UV-Cured Ceramic-Reinforced Finish
- Extremely Durable
- Excellent Indentation Resistance
- Excellent Chemical Resistance
- Excellent Slip Resistance
- 100% Recyclable

WARRANTY

10-Year Commercial Warranty
20-Year Residential Warranty



RP312_C37 Palmer Plank

.....

ENVIRONMENTAL PRODUCT DECLARATION®

is available at
sixdegreesflooring.com

.....

For additional room scene images of all Six Degrees products, please visit **sixdegreesflooring.com**, click on the product page to view colors & room scene options.

.....

For the most current and complete technical, installation and maintenance information, please visit **sixdegreesflooring.com**



Planks ○ 7-1/8" x 47-1/4"



RP131_C02
Briggs Rustic



RP174_C09
Huntingdon

NEW
D
2.0



RP174_C14
Cooper Brown



RP188_C29
Gleason Gray

NEW
D
2.0



RP208_C11
Miller Classic

D
2.0



RP210_C04
Alton Wood



RP220_C12
Alexander Oak

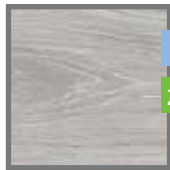
NEW
D
2.0



RP232_C04
Union Plank



RP233_C08
McDougal Oak



RP233_C17
Silver Steele

D
2.0



RP233_C20
Elwood

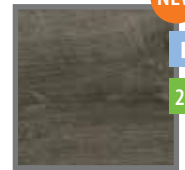


RP233_C21
Burnham Oak



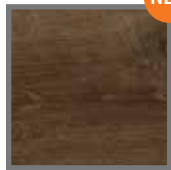
RP236_C13
Taylor Taupe

D
2.0
H C



RP312_C04
Kennard Classic

NEW
D
2.0



RP312_C37
Palmer Plank

NEW



RP324_C05
Oxford Gray



RP324_C06
Watson Iron

NEW
D
2.0
H C



RP330_C02
Woodland

NEW



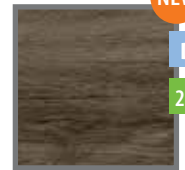
RP350_C01
Vintage VanBuren

D
2.0



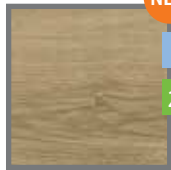
RP381_C02
Meadow Lane

NEW
D
2.0



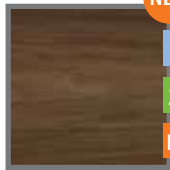
RP401_C21
Buckley Brown

NEW



RP401_C35
Nichols Oak

NEW
D
2.0



RP437_C23
Roosevelt Red

NEW
D
2.0
H C



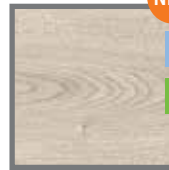
RP445_C19
Johnson Whitewash

NEW



RP454_C18
West Ridge Wood

NEW



RP511_C02
Oaklawn

NEW
D
2.0



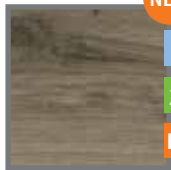
RP511_C05
Raegan Lane

NEW
D
2.0



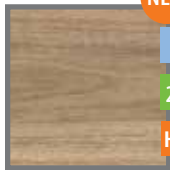
RP511_C06
Gray Park

NEW



RP534_C08
Dashwood

NEW
D
2.0
H C



RP545_C01
Myers Court

NEW
D
2.0
H C



RP546_C06
Arbor Ash Blonde

NEW

Planks

Nominal Dimensions: 7-1/8" x 47-1/4" x 3 mm plank

Finish: Embossed 12 mil CRU

Quantity Per Carton: 15 planks (7-1/8" x 47-1/4")

Sq. Ft. Per Carton: 34.84 sq. ft./carton

Tiles

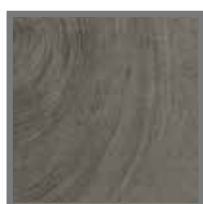
Nominal Dimensions: 12" x 24" x 3 mm tile

Finish: Embossed 12 mil CRU

Quantity Per Carton: 18 tiles (12" x 24")

Sq. Ft. Per Carton: 36 sq. ft./carton

Tiles ○ 12" x 24"



RT317_C06 Hughes Gray



RT317_C05 Hays Beige



RT269_C03 Star Vintage



RT269_C02 Perry Vintage



RT315_C04 Summit Stone



RT349_C01 Potter



Tiles ○ 18" x 18"



D DEGRADUS Available in the DeGradus format

2.0 R 2.0 Available in the Radius 2.0 format

Tiles

Nominal Dimensions: 18" x 18" x 3 mm tile
 Finish: Embossed 12 mil CRU
 Quantity Per Carton: 16 tiles (18" x 18")
 Sq. Ft. Per Carton: 36 sq. ft./carton



HC High Contrast VISUALS

Many of the Radius visuals are high contrast visuals, and therefore not all colors and/or textures represented in the full design will be visible in this brochure. Items marked with the **HC** symbol are considered high contrast. We suggest visiting www.sixdegreesflooring.com to view full size room scene visuals of these designs. You may also email support@sixdegreesflooring.com to order full-size samples.

Radius™ 2.0 NEW

Our NEW Radius™ 2.0 2.5 mm/20 mil format was created with Main Street commercial business in mind. With a heavier ceramic reinforced wear surface than our classic Radius, Radius 2.0 is a perfect choice for a variety of commercial installations including, but not limited to, office buildings, churches, and boutique retail. More variety means you have more choices to fit your budget and wear needs.



Tiles ○ 18" x 18"



20RT531_C02
Wainwright



20RT531_C09
Westhaven

Planks ○ 7-1/8" x 47-1/4"



20RP174_C09
Huntingdon



20RP188_C29
Gleason Gray



20RP208_C11
Miller Classic



20RP233_C17
Silver Steele



20RP236_C13
Taylor Taupe

HC



20RP312_C04
Kennard Classic



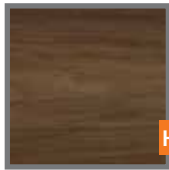
20RP350_C01
Vintage VanBuren



20RP401_C21
Buckley Brown



20RP401_C35
Nichols Oak



20RP437_C23
Roosevelt Red

HC



20RP511_C02
Oaklawn

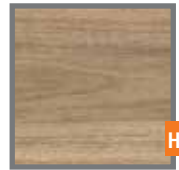


20RP511_C05
Raegan Lane



20RP534_C08
Dashwood

HC



20RP545_C01
Myers Court

HC

Tiles

Nominal Dimensions: 18" x 18" x 2.5 mm tile
Finish: Embossed 20 mil CRU
Quantity Per Carton: 16 tiles (18" x 18")
Sq. Ft. Per Carton: 36 sq. ft./carton

Planks

Nominal Dimensions: 7-1/8" x 47-1/4" x 2.5 mm plank
Finish: Embossed 20 mil CRU
Quantity Per Carton: 15 planks (7-1/8" x 47-1/4")
Sq. Ft. Per Carton: 34.84 sq. ft./carton

WARRANTY

15-Year Commercial Warranty



20RP188_C29 Gleason Gray





GREENGUARD
 GREENGUARD Certified
 GREENGUARD Certified
 GREENGUARD Certified
 GREENGUARD Certified



NEW



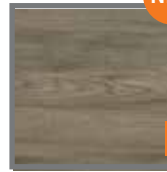
NEW



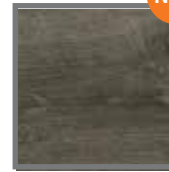
NEW



NEW



NEW



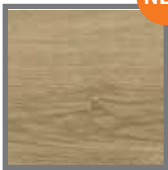
NEW



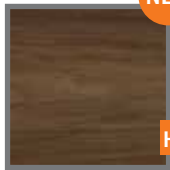
NEW



NEW



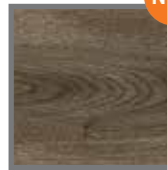
NEW



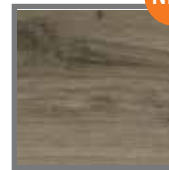
NEW



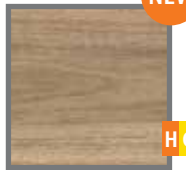
NEW



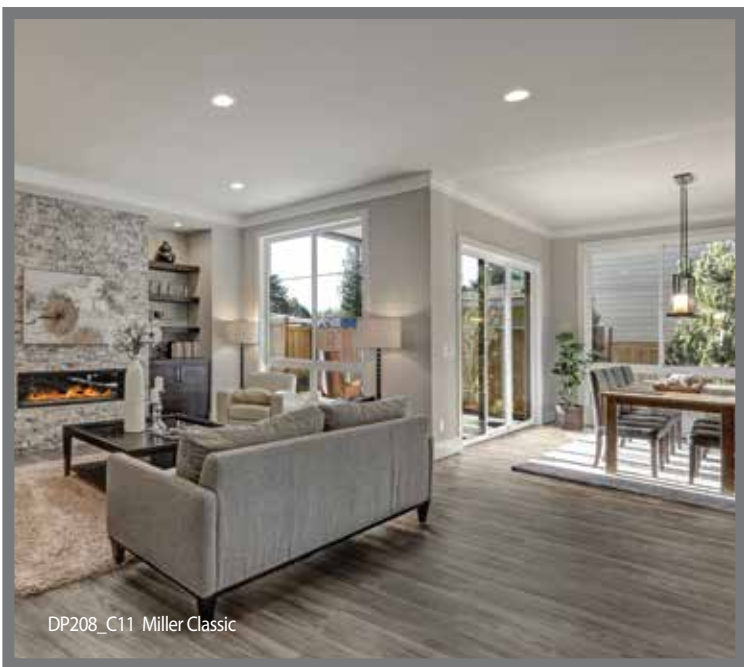
NEW



NEW



NEW



DP208 C11 Miller Classic

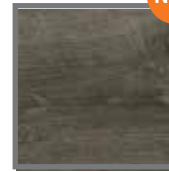
NEW



NEW

DT531_C09
Westhaven

NEW



NEW



NEW

10-Year Residential /Multi-Family Warranty

Crossover Chart

| PATTERN NAME | RADIUS | DEGRADUS | R 2.0 (RADIUS 20 MIL) | PLANK/TILE | HIGH CONTRAST |
|-------------------|-----------|------------|--------------------------|------------|---------------|
| BRIGGS RUSTIC | RP131_C02 | | | PLANK | |
| HUNTINGDON | RP174_C09 | DP174_C09* | 20RP174_C09 | PLANK | |
| COOPER BROWN | RP174_C14 | | | PLANK | |
| GLEASON GRAY | RP188_C29 | DP188_C29* | 20RP188_C29 | PLANK | |
| MILLER CLASSIC | RP208_C11 | DP208_C11* | 20RP208_C11 | PLANK | |
| ALTON WOOD | RP210_C04 | | | PLANK | |
| ALEXANDER OAK | RP220_C12 | | | PLANK | |
| UNION PLANK | RP232_C04 | | | PLANK | |
| McDOUGAL OAK | RP233_C08 | | | PLANK | |
| SILVER STEELE | RP233_C17 | DP233_C17* | 20RP233_C17 | PLANK | |
| ELWOOD | RP233_C20 | | | PLANK | |
| BURNHAM OAK | RP233_C21 | | | PLANK | |
| TAYLOR TAUPE | RP236_C13 | DP236_C13* | 20RP236_C13 | PLANK | H/C |
| KENNARD CLASSIC | RP312_C04 | DP312_C04* | 20RP312_C04 | PLANK | |
| PALMER PLANK | RP312_C37 | | | PLANK | |
| OXFORD GRAY | RP324_C05 | | | PLANK | |
| WATSON IRON | RP324_C06 | | | PLANK | |
| WOODLAND | RP330_C02 | | | PLANK | |
| VINTAGE VANBUREN | RP350_C01 | DP350_C01* | 20RP350_C01 | PLANK | |
| MEADOW LANE | RP381_C02 | | | PLANK | |
| BUCKLEY BROWN | RP401_C21 | DP401_C21* | 20RP401_C21 | PLANK | |
| NICHOLS OAK | RP401_C35 | DP401_C35* | 20RP401_C35 | PLANK | |
| ROOSEVELT RED | RP437_C23 | DP437_C23* | 20RP437_C23 | PLANK | H/C |
| JOHNSON WHITEWASH | RP445_C19 | | | PLANK | |
| WEST RIDGE WOOD | RP454_C18 | | | PLANK | |
| OAKLAWN | RP511_C02 | DP511_C02* | 20RP511_C02 | PLANK | |
| RAEGAN LANE | RP511_C05 | DP511_C05* | 20RP511_C05 | PLANK | |
| GRAY PARK | RP511_C06 | | | PLANK | |
| DASHWOOD | RP534_C08 | DP534_C08* | 20RP534_C08 | PLANK | H/C |
| MYERS COURT | RP545_C01 | DP545_C01* | 20RP545_C01 | PLANK | H/C |
| ARBOR ASH BLONDE | RP546_C06 | | | PLANK | |
| PERRY VINTAGE | RT269_C02 | | | TILE | |
| STAR VINTAGE | RT269_C03 | | | TILE | |
| SUMMIT STONE | RT315_C04 | | | TILE | |
| HAYS BEIGE | RT317_C05 | | | TILE | |
| HUGHES GRAY | RT317_C06 | | | TILE | |
| POTTER | RT349_C01 | | | TILE | |
| BRADNER | RT496_C05 | | | TILE | |
| BANNISTER | RT496_C14 | | | TILE | H/C |
| SPRINGVILLE STONE | RT505_C15 | | | TILE | |
| WAINWRIGHT | RT531_C02 | DT531_C02 | 20RT531_C02 | TILE | |
| WILLISTON | RT531_C08 | | | TILE | |
| WESTHAVEN | RT531_C09 | DT531_C09 | 20RT531_C09 | TILE | |

KEY CHART

D DEGRADUS
 2.0 R 2.0
 H/C High Contrast
 * 6 x 48





.....

For additional room scene images of all Six Degrees products, please visit **sixdegreesflooring.com**, click on the product page to view colors & room scene options.

.....



Compass™ Collection

Where will your design direction take you? Somewhere clean and modern? Perhaps bold and bright? How about soothing and comfortable? The choice is yours! Now with 56 designer-influenced colors, including 8 new colors in our Compass Colors Collection, you may have a hard time deciding where you want to go. Proudly made in the USA, the Compass™ Collection is heavily inventoried and ready to ship, so you can get where you want to go on time.

At Six Degrees, we are here to help, so *Let Our Compass™ Be Your Guide.*



HC HIGH CONTRAST VISUALS

Many of the Compass visuals are high contrast visuals, and therefore not all colors and/or textures represented in the full design will be visible in this brochure. Items marked with the HC symbol are considered high contrast. We suggest visiting www.sixdegreesflooring.com to view full size and room scene visuals of these designs. You may also email support@sixdegreesflooring.com to order full-size samples



CP420_C01 Nashville

The Six Degrees of **Compass**™ FLOORING

- 56 designer-inspired colors and patterns, all at a single price point
- A 28 mil wear layer enhanced with the addition of our UV Cured, Ceramic-Reinforced Urethane finish makes it the ideal choice for heavy commercial traffic areas such as hospitals and retail
- A lower-maintenance flooring option which does not require a finish
- An eco-friendly product made from locally sourced raw materials
- Simple glue down installation allows for greater pattern/design flexibility
- Readily available ... made and inventoried in the USA!

FEATURES

- Easy to Maintain
- Qualifies for LEED® Credits
- GREENGUARD Gold Certification
- Ceramic-Reinforced UV-Cured Finish
- Enhanced with EnviroSD™ Antibacterial Agent
- Extremely Durable
- Excellent Indentation Resistance
- Excellent Chemical Resistance
- Excellent Slip Resistance
- 100% Recyclable

WARRANTY

20-Year Commercial Warranty



.....
**ENVIRONMENTAL
PRODUCT
DECLARATION®**
is available at
sixdegreesflooring.com

.....
For additional room scene images of all Six Degrees products, please visit **sixdegreesflooring.com**, click on the product page to view colors & room scene options.

.....
For the most current and complete technical, installation and maintenance information, please visit **sixdegreesflooring.com**



Compass™ Collection

Planks 6" x 48"

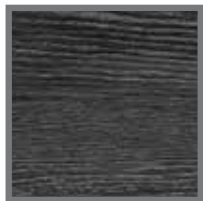
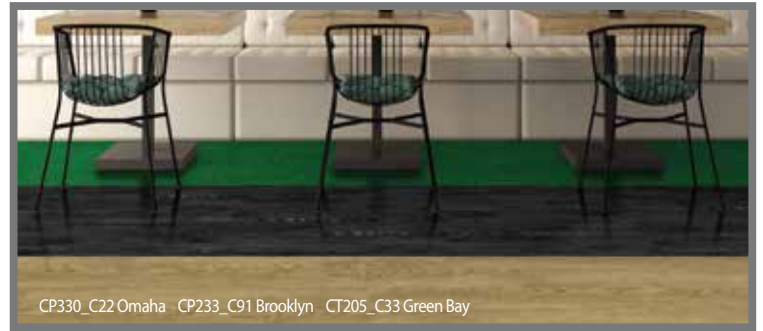
Planks

Nominal Dimensions: 6" x 48" x 3 mm plank

Finish: Embossed 28 mil CRU

Quantity Per Carton: 18 planks (6" x 48")

Sq. Ft. Per Carton: 36 sq. ft./carton



CP233_C91 Brooklyn



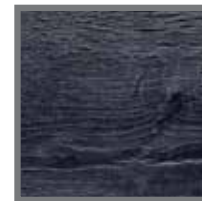
CP316_C04 Stowe



CP421_C03 Chicago



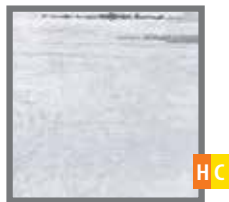
CP221_C36 San Francisco



CP406_C10 St. Louis



CP211_C11 Seattle



CP427_C02 Charleston



CP406_C09 Park City



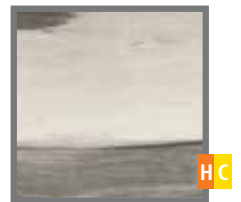
CP240_C10 Toronto



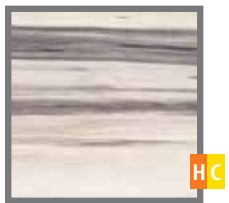
CP330_C21 Monterey



CP427_C01 New Orleans



CP420_C03 Los Angeles



CP420_C01 Nashville



CP420_C02 Montreal



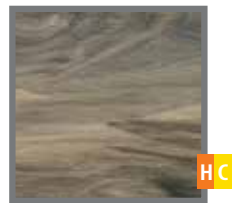
CP422_C01 Hilo



CP263_C13 Aspen



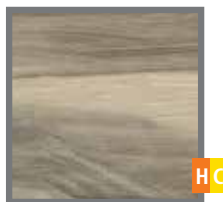
CP330_C22 Omaha



CP421_C01 Austin



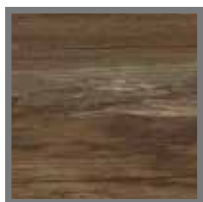
CP236_C13 Portland



CP421_C02 Vancouver



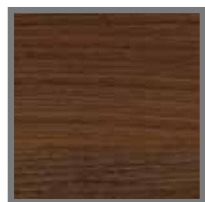
CP422_C02 Asheville



CP236_C15 Denver



CP312_C04 Bozeman



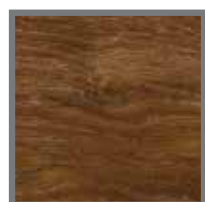
CP188_C14 Savannah



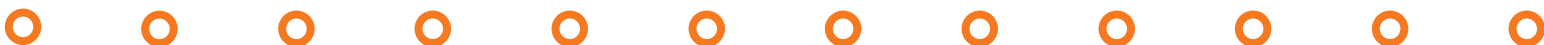
CP330_C02 Cleveland



CP406_C08 Dallas



CP220_C12 Birmingham



Tiles ○ 18" x 18"

Tiles

Nominal Dimensions: 18" x 18" x 3 mm tile

Finish: Embossed 28 mil CRU

Quantity Per Carton: 16 tiles (18" x 18")

Sq. Ft. Per Carton: 36 sq. ft./carton



CT419_C01 Miami



CT419_C02 Calgary



CT423_C01 Phoenix



CT423_C02 New York



CT405_C08 Boston



CT405_C09 Anchorage



CT423_C02 New York



CT419_C02 Calgary

Tiles ○ 12" x 24"

Tiles

Nominal Dimensions: 12" x 24" x 3 mm tile

Finish: Embossed 28 mil CRU

Quantity Per Carton: 18 tiles (12" x 24")

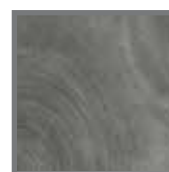
Sq. Ft. Per Carton: 36 sq. ft./carton



CT317_C05 Richmond



CT317_C07 Providence



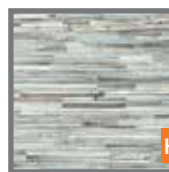
CT317_C06 Baltimore



CT424_C03 Philly



CT424_C01 Louisville



CT424_C02 Minneapolis



CT315_C02 Detroit



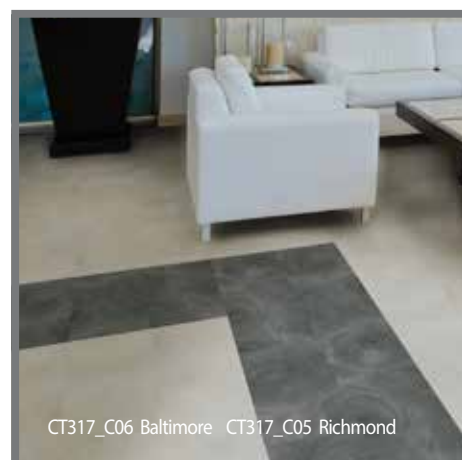
CT315_C04 DC



CT315_C02 Detroit CP221_C36 San Francisco



CT424_C02 Minneapolis



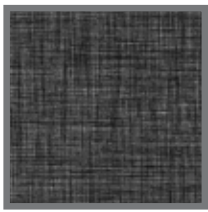
CT317_C06 Baltimore CT317_C05 Richmond



Compass Colors™ Collection

Where will your design direction take you? Somewhere bold, bright and colorful? Then let the Compass Colors™ Collection lead the way. With 15 new beautiful colors, our Compass Colors™ Collection is great for schools, pediatrics offices, corporate lobbies... anywhere you want your floors to stand out or add a splash of color. Best of all, they're made here in the USA. It's a big world out there...we're here to help you make it more colorful. The Compass Colors™ Collection... ***A Colorful Solution for Flooring Needs.***

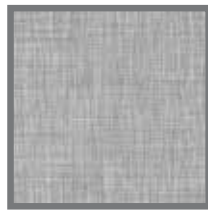
CT205_C26 Orlando CT205_C33 Green Bay CT205_C24 Knoxville CT205_C31 Des Moines CT205_C34 Boise CT205_C27 Cincinnati CT205_C36 Baton Rouge



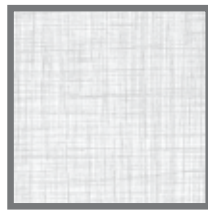
CT205_C38 San Antonio



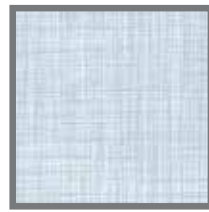
CT205_C08 Pittsburgh



CT205_C31 Des Moines



CT205_C23 Vegas



CT205_C25 Charlotte



CT205_C34 Boise



CT205_C24 Knoxville



CT205_C27 Cincinnati



CT205_C35 Tulsa



CT205_C36 Baton Rouge



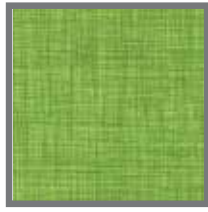
CT205_C37 Memphis



CT205_C28 Atlanta



CT205_C26 Orlando



CT205_C32 San Diego



CT205_C33 Green Bay

FEATURES

- Easy to Maintain
- Qualifies for LEED® Credits
- GREENGUARD Gold Certification
- Ceramic-Reinforced UV-Cured Finish
- Enhanced with EnviroSD™ Antibacterial Agent
- Extremely Durable
- Excellent Indentation Resistance
- Excellent Chemical Resistance
- Excellent Slip Resistance
- 100% Recyclable

Tiles

Nominal Dimensions: 12" x 24" x 3 mm tile
 Finish: Embossed 28 mil CRU
 Quantity Per Carton: 18 tiles (12" x 24")
 Sq. Ft. Per Carton: 36 sq. ft./carton

WARRANTY

20-Year Commercial Warranty



CT205_C38 San Antonio
CT205_C31 Des Moines
CT205_C37 Memphis



CT205_C26 Orlando CT205_C32 San Diego CT205_C23 Vegas CT315_C04 DC





How does the saying go? You never get a second chance to make a good first impression. Well, with Impression™ Vinyl Stair Treads, you won't need one. Our unique and expertly engineered tread designs match perfectly with many of our top-selling styles, so the transition from floor to stairs flows smoothly. The one-piece tread/riser design is constructed from the same high quality, heavy commercial vinyl plank we produce, ensuring you a consistent and beautifully finished product every time.

Impression™ Treads from Six Degrees... a forward thinking stair tread solution.

IS406_C09 and IS406_C09S (with visual strip), Park City

*(S) - Visual Strips
To add the visual strip,
please specify an "S"
At the end of the part #
I.E. IS211_C01S





IS174_C15 *S)
Caulk: IC174_C15



IS211_C01 *S)
Caulk: IC211_C01



IS215_C08 *S)
Caulk: IC215_C08



IS220_C12 *S)
Caulk: IC220_C12



IS221_C36 *S)
Caulk: IC221_C36



IS233_C05 *S)
Caulk: IC233_C05



IS236_C13 *S)
Caulk: IC236_C13



IS330_C02 *S)
Caulk: IC330_C02



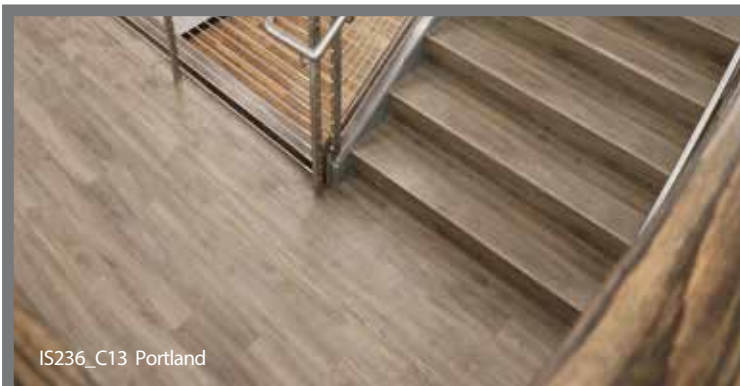
IS406_C09 *S)
Caulk: IC406_C09



IS330_C22 *S)
Caulk: IC330_C22

FEATURES

- Exact match to our 3 mm/28 mil LVT options
- One-piece tread-riser design with the break at the riser makes for a clean smooth finish
- Coordinating optional J-channel accessory available for a clean install and look
- Optional visual strip can be incorporated into the film layer
- All treads are made to order and specially packaged
- GREENGUARD Gold Certification
- Ceramic-Reinforced UV-Cured Finish
- Enhanced with EnviroSD™ Anti-Bacterial Agent
- Extremely Durable
- Excellent Indentation Resistance
- Excellent Chemical Resistance
- Excellent Slip Resistance
- 100% Recyclable



IS236_C13 Portland

TREAD PROFILE



Tread Depth: 14-1/8"

Riser Height: 8-1/4"

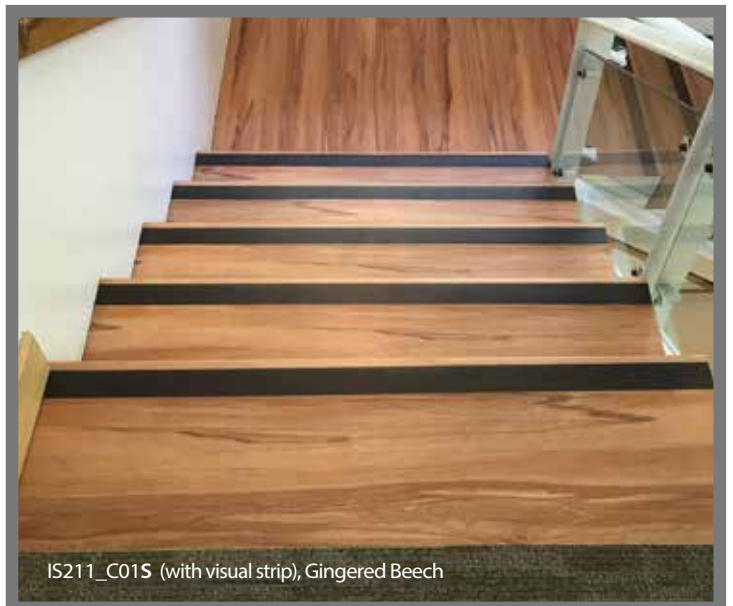
(Depth and height can be trimmed to fit)

Lengths: Available in 6" increments from 36" up to 108"

Finish: Embossed 28 mil CRU

WARRANTY

10-Year Commercial Warranty



IS211_C01S (with visual strip), Gingered Beech



○ Packaging Data / Specifications

Radius™

Planks

Nominal Dimensions: 7-1/8" x 47-1/4" x 3 mm plank
Finish: Embossed 12 mil CRU
Quantity Per Carton: 15 planks (7-1/8" x 47-1/4")
Sq. Ft. Per Carton: 34.84 sq. ft./carton



10-Year Commercial Warranty

20-Year Residential Warranty

Tiles 12"x24"

Nominal Dimensions: 12" x 24" x 3 mm tile
Finish: Embossed 12 mil CRU
Quantity Per Carton: 18 tiles (12" x 24")
Sq. Ft. Per Carton: 36 sq. ft./carton

Tiles 18"x18"

Nominal Dimensions: 18" x 18" x 3 mm tile
Finish: Embossed 12 mil CRU
Quantity Per Carton: 16 tiles (18" x 18")
Sq. Ft. Per Carton: 36 sq. ft./carton

Radius™ 2.0

Planks

Nominal Dimensions: 7-1/8" x 47-1/4" x 2.5 mm plank
Finish: Embossed 20 mil CRU
Quantity Per Carton: 15 planks (7-1/8" x 47-1/4")
Sq. Ft. Per Carton: 34.84 sq. ft./carton

15-Year Commercial Warranty

Tiles

Nominal Dimensions: 18" x 18" x 2.5 mm tile
Finish: Embossed 20 mil CRU
Quantity Per Carton: 16 tiles (18" x 18")
Sq. Ft. Per Carton: 36 sq. ft./carton



DeGradus™

Planks

Nominal Dimensions: 6" x 48" x 2 mm tile
Finish: Embossed 7 mil PU
Quantity Per Carton: 27 planks (6" x 48")
Sq. Ft. Per Carton: 54 sq. ft./carton

10-Year Residential /Multi-Family Warranty

Tiles

Nominal Dimensions: 18" x 18" x 2 mm tile
Finish: Embossed 7 mil PU
Quantity Per Carton: 24 tiles (18" x 18")
Sq. Ft. Per Carton: 54 sq. ft./carton



Compass/Compass Colors™

Planks

Nominal Dimensions: 6" x 48" x 3 mm plank
Finish: Embossed 28 mil CRU
Quantity Per Carton: 18 planks (6" x 48")
Sq. Ft. Per Carton: 36 sq. ft./carton

Tiles 18"x18"

Nominal Dimensions: 18" x 18" x 3 mm tile
Finish: Embossed 28 mil CRU
Quantity Per Carton: 16 tiles (18" x 18")
Sq. Ft. Per Carton: 36 sq. ft./carton

Tiles 12"x24"

Nominal Dimensions: 12" x 24" x 3 mm tile
Finish: Embossed 28 mil CRU
Quantity Per Carton: 18 tiles (12" x 24")
Sq. Ft. Per Carton: 36 sq. ft./carton

20-Year Commercial Warranty



Impression™

Stair Tread

Tread Depth: 14-1/8"
Riser Height: 8-1/4"
(Depth and height can be trimmed to fit)
Lengths available in 6" increments from 36" up to 108"
Finish: Embossed 28 mil CRU

**All treads are made to order and specially packaged.

10-Year Commercial Warranty



.....
For the most current and complete technical data, and CSI formatted specifications info, please visit **sixdegreesflooring.com** or scan the QR code above.
.....



○ Excelsior/ Installation & Maintenance

Everything you need for a beautifully installed and maintained floor. All Excelsior adhesives and installation products have been tested by our technical services team for quality and performance with all Six Degrees branded flooring and treads.

Adhesives



SP-500
Acrylic Aerosol
Pressure Sensitive
Adhesive



AW-510
Acrylic Wet-Set
Adhesive



AP-520
Acrylic Roll on or
Troweled Pressure
Sensitive Adhesive



AP-525
Modified Pressure
Sensitive Adhesive



EN-610
Epoxy Nose
Filler Adhesive



TP-620
Pressure-Sensitive
Tape Adhesive



U-705
Urethane Resilient
Adhesive



EW-710
Epoxy Wet-Set
Adhesive

Product Limitations

- Adhesive selections must be made based on porosity of the substrate and the final usage of the space
- Refer to Adhesive Chart for specific adhesive recommendations based on product and substrate type
- For a complete list of product limitations, please see each product's Technical Data Sheet

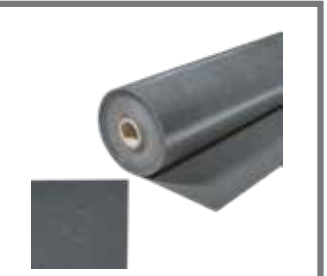
ADHESIVE RECOMENDATIONS

| Product Description | Approved Porous Substrates (Concrete, Wood, Cementitious Materials) | Approved Non-Porous Substrates (Metal, Resinous Substrates) | Existing Stone Flooring Terrazzo, Ceramic Porcelain | Properly Prepared Existing Vinyl Flooring (VAT, VCT, SVT, Quartz Tile, Sheet Vinyl) |
|---------------------|------------------------------------------------------------------------|----------------------------------------------------------------|-----------------------------------------------------|----------------------------------------------------------------------------------------|
| LVT Tile & Planks | SP-500, AW-510, AP-520, EW-710, AP-525, U-705 | SP-500, AW-510, AP-520, EW-710, AP-525, U-705 | | SP-500, EW-710, AP-525, U-705 |

Sound Control Underlayment



CSU-400
Cork Sound Control
Underlayment



FSU-410
Floating Sound
Underlayment

Latex Caulk



55AC
Acrylic Color
Latex Caulk

Maintenance Products



NC-900
All Purpose
Neutral Cleaner



FR-920
Floor Finish
Remover



MF-940
Matte Acrylic
Floor Finish



GF-950
Gloss Acrylic
Floor Finish

For the most current and complete technical, installation and maintenance information, please visit **sixdegreesflooring.com** or scan our QR code

