

VaraCore™

RIGID VINYL PLANK & TILE



six degrees
FLOORING SURFACES™



Colorado
VPWP401_C22G

Premium
build
Made in
the USA



Wabash
VP232_C04G

Potomac
VP233_C08G



VaraCore™ RIGID VINYL PLANK & TILE

VaraCore™ by Six Degrees is a rigid core vinyl flooring consisting of 15 natural wood and stone visuals. With VaraCore™, you don't need an adhesive, which makes it a beautiful and sustainable option that can be installed over a variety of substrates. Now proudly Made In The USA and available in two formats, 4mm/12 mil and our new 5mm/20 mil (which has added features like an attached pad and our Next GEN finish), you can install VaraCore™ in even more applications: hospitality, retail, commercial and residential. Our core provides greater compression strength while maintaining flexibility, and uses no glues, making it a stronger and more environmentally friendly option over standard WPC. ***Beauty and strength combined in one easy to install package ... VaraCore™ from Six Degrees.***

you're just a few steps away



VaraCore™ Planks • 7-1/4" x 47-3/4"



VP233_C08G / VPWP233_C08G Potomac



VP401_C22G / VPWP401_C22G Colorado



VP312_C38G / VPWP312_C38G Rio Grande



VP312_C37G / VPWP312_C37G Mississippi



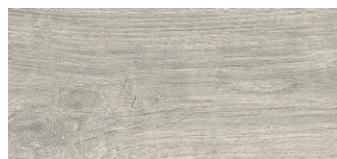
VP312_C04G / VPWP312_C04G Yukon



VP208_C11G / VPWP208_C11G Williamette



VP220_C12G / VPWP220_C12G Churchill



VP312_C35G / VPWP312_C35G Hudson



VP401_C21G / VPWP401_C21G Tennessee



VP312_C36G / VPWP312_C36G Cimarron



VP401_C23G / VPWP401_C23G Ottawa



VP401_C20G / VPWP401_C20G Cumberland

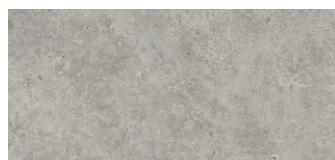


VP232_C04G / VPWP232_C04G Wabash

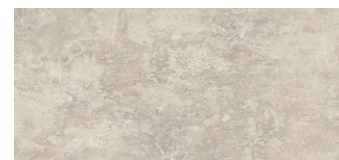


Rio Grande
VP312_C38G

Tiles • 12" x 24"



VT349_C01G / VTWP349_C01G Connecticut



VT362_C10G / VTWP362_C10G Missouri



Connecticut
VTWP349_C01G

Technical

FEATURES

- Easy to Maintain
- FloorScore® Certified
- 5mm/20 mil includes Next Generation Finish (GEN) – Improved durability over other ceramic urethane finishes
- Excellent Indentation Resistance
- Excellent Slip Resistance
- Excellent Chemical Resistance
- More durable than WPC – More flexible while maintaining compression strength to ease installation
- More stable than WPC – Better stability against temperature changes
- Waterproof
- Less floor undulation caused by uneven surface/subfloor imperfections
- More Eco-friendly – unlike WPC, there is no glue in our core, ensuring low VOCs



CERTIFIED BY
SCS Global Services

SPECIFICATIONS: 4mm/12 mil

4mm/12 mil Plank:

- Nominal Dimensions: 7 1/4" x 47 3/4" x 4mm plank
- Finish: Embossed CRU 12 mil
- Quantity Per Carton: 10 planks
- Sq Ft Per Carton: 24.22 SF



4mm/12 mil Tile:

- Nominal Dimensions: 12" x 24" x 4mm tile
- Finish: Embossed CRU 12 mil
- Quantity Per Carton: 12 tiles
- Sq Ft Per Carton: 24 SF

WARRANTY

- 15-Year Residential/Multi-family Warranty
- 5-Year Limited Commercial Warranty

SPECIFICATIONS: 5mm/20 mil

5mm/20 mil Plank (attached pad):

- Nominal Dimensions: 7 1/4" x 47 3/4" x 5mm plank
- Finish: Embossed Next Gen 20 mil
- Quantity Per Carton: 8 planks
- Sq Ft Per Carton: 19.31 SF



5mm/20 mil Tile (attached pad):

- Nominal Dimensions: 12" x 24" x 5mm tile
- Finish: Embossed Next Gen 20 mil
- Quantity Per Carton: 10 tiles
- Sq Ft Per Carton: 20 SF

WARRANTY

- 20-Year Commercial Warranty

TEST INFORMATION

ASTM F 3261 – Class I, Type B, Backing Class A

Meets or exceeds recommendations

ASTM E 648 – Critical Radiant Flux:

Class I, >.45 W/cm²

ASTM E 662 – Smoke Density: Pass

ASTM D 2047 – Slip Resistance: > 0.60

ASTM F 970 – Static Load Limit: Pass

ASTM F 925 – Chemical Resistance:

Excellent (chart available)

6
six degrees
FLOORING SURFACES™

931 South Springville Avenue • Fostoria, Ohio 44830

844-432-5885



For the most current and complete technical, installation and maintenance information, please visit **sixdegreesflooring.com**