



six degrees
FLOORING SURFACES™

let our compass be your guide
○ ○ ○ ○ ○ ○

Compass™ VINYL FLOORING





The Six Degrees of
Compass™ VINYL FLOORING

- 48 designer-inspired colors and patterns, all at a single price point
- A 28 mil wear layer enhanced with the addition of our UV Cured, Ceramic-Reinforced Urethane finish makes it the ideal choice for heavy commercial traffic areas such as hospitals and retail
- A lower-maintenance flooring option which does not require a finish
- An eco-friendly product made from locally sourced raw materials
- Simple glue down installation allows for greater pattern/design flexibility
- Readily available ... made and inventoried in the USA!

Compass™ Tiles • 18" x 18"



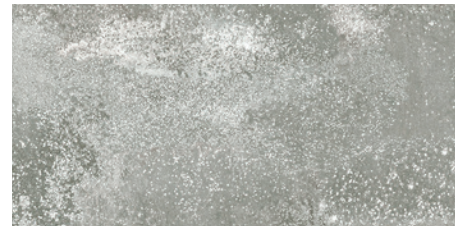
CT419_C01

Miami



CT419_C02

Calgary



CT423_C01 **HC**

Phoenix



CT405_C09 **HC**

Anchorage



CT405_C08 **HC**

Boston



CT423_C02 **HC**

New York

HC HIGH CONTRAST VISUALS

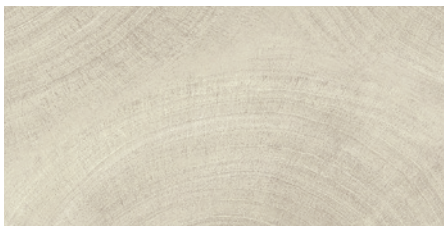
Many of the Compass visuals are high contrast visuals, and therefore not all colors and/or textures represented in the full design will be visible in this brochure. Items marked with the **HC** symbol are considered high contrast. We suggest visiting www.sixdegreesflooring.com to view full size and room scene visuals of these designs. You may also email support@sixdegreesflooring.com to order full-size samples.

On the cover:
 Nashville CP420_C01

Minneapolis
 CT424_C02



Compass™ Tiles • 12" x 24"



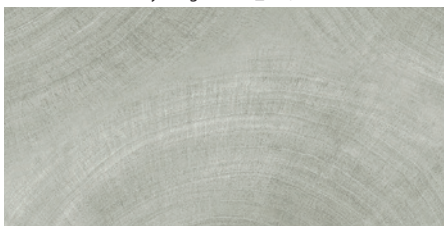
CT317_C05 (Crossover to Radius Hays Beige RT317_C05) Richmond



CT424_C03 HC Philly



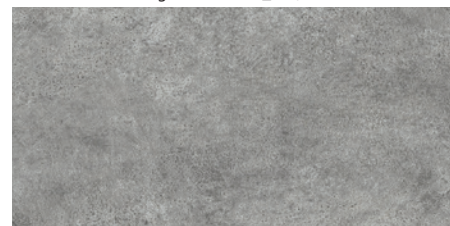
CT315_C02 (Crossover to Radius Eagle Point RT315_C02) Detroit



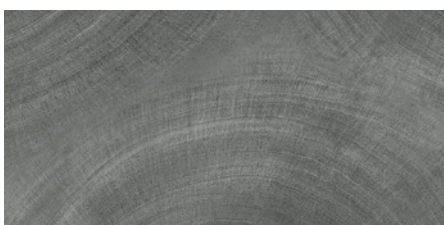
CT317_C07 Providence



CT424_C01 Louisville



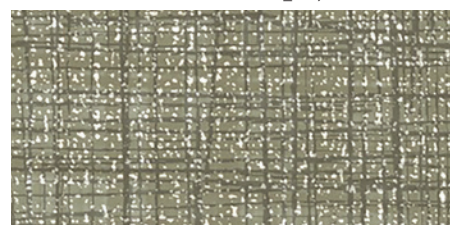
CT315_C04 (Crossover to Radius Summit Stone RT315_C04) DC



CT317_C06 (Crossover to Radius Hughes Gray RT317_C06) Baltimore



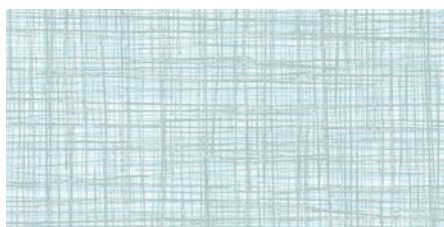
CT424_C02 HC Minneapolis



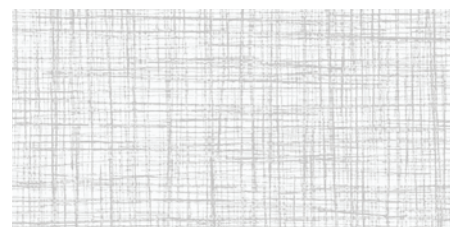
CT205_C08 Pittsburgh



CT205_C28 Atlanta



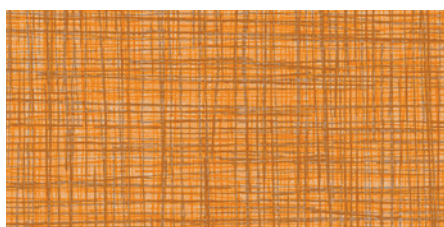
CT205_C25 Charlotte



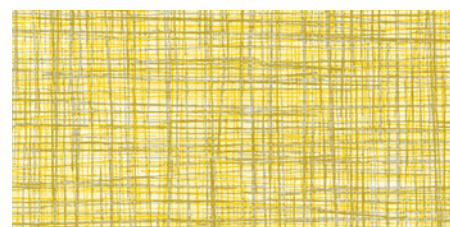
CT205_C23 Vegas



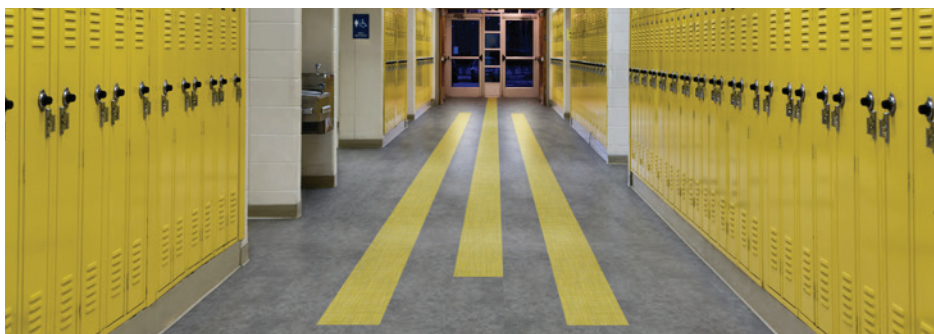
CT205_C27 Cincinnati



CT205_C24 Knoxville



CT205_C26 Orlando



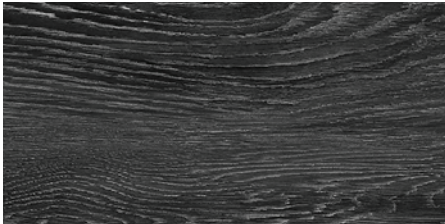
DC CT315_C04, Orlando CT205_C26



six degrees
FLOORING SURFACES™



Compass™ Planks • 6" x 48"



CP233_C91 Brooklyn



CP211_C11 HC Seattle



CP427_C01 HC New Orleans



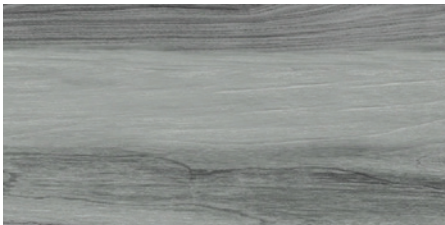
CP316_C04 (Crossover to Radius Nye Sawn Cut RP316_C04) Stowe



CP427_C02 HC Charleston



CP420_C03 HC Los Angeles



CP421_C03 HC Chicago



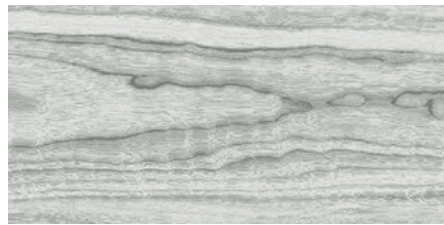
CP406_C09 Park City



CP420_C01 HC Nashville



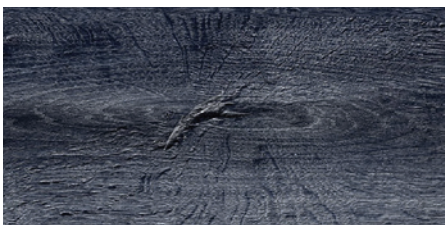
CP221_C36 San Francisco



CP240_C10 Toronto



CP420_C02 HC Montreal



CP406_C10 St. Louis



CP330_C21 Monterey



CP422_C01 Hilo



six degrees
FLOORING SURFACES™



Monterey CP330_C21, Cleveland CP330_C02, Omaha CP330_C22





CP263_C13

Aspen



CP421_C02 HC

Vancouver



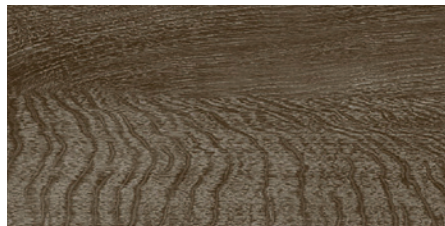
CP188_C14 (Crossover to Radius
Glenview RP188_C14)

Savannah



CP330_C22

Omaha



CP422_C02

Asheville



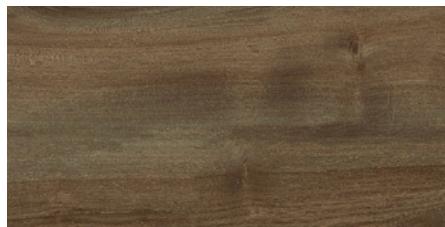
CP330_C02 (Crossover to Radius
Woodland RP330_C02)

Cleveland



CP421_C01 HC

Austin



CP236_C15

Denver



CP406_C08 HC

Dallas



CP236_C13 HC (Crossover to Radius
Taylor Taupe RP236_C13)

Portland



CP312_C04

Bozeman



CP220_C12 (Crossover to Radius
Alexander Oak RP220_C12)

Birmingham

Compass™ COLLECTION

Where will your design direction take you? Somewhere clean and modern? Perhaps bold and bright? How about soothing and comfortable? The choice is yours, and with 48 designer-influenced colors, you may have a hard time deciding where you want to go. Proudly made in the USA, the Compass™ Collection is heavily inventoried and ready to ship, so you can get where you want to go on time.

At Six Degrees, we are here to help, *so Let Our Compass™ Be Your Guide.*

HC HIGH CONTRAST VISUALS

Many of the Compass visuals are high contrast visuals, and therefore not all colors and/or textures represented in the full design will be visible in this brochure. Items marked with the HC symbol are considered high contrast. We suggest visiting www.sixdegreesflooring.com to view full size and room scene visuals of these designs. You may also email support@sixdegreesflooring.com to order full-size samples.



The Six Degrees of Sustainability

At Six Degrees, we are dedicated to the environment and work tirelessly to provide LVT products that are not only beautiful, but durable and eco-friendly, as well. We are proud to be a strong environmental steward and continue to work to improve upon our sourcing and production practices, offering additional satisfaction that you have selected a floor with the environment in mind. With Compass™ Vinyl Plank and Tile, you're just a few steps away from *creating a more eco-friendly environment inside and out.*

- Over 50% of our raw materials are sourced within a 100 mile radius of our manufacturing facility.
- Our floors are 100% recyclable after use, which means even when your life with the floor is complete, a new product can be created... and that means less waste in landfills.
- Because all Six Degrees products are proudly manufactured in the USA, there is less carbon footprint than most LVT options. Less transport and fuel costs are needed to get your new flooring to you, our valued customer.
- Our products do not require an additional finish, which means less chemicals, less water and less energy are needed to maintain them and keep them looking beautiful.
- Six Degrees uses only 100% virgin vinyl materials. There is no recycled content and therefore no need to worry about contaminants in your flooring.
- Only Non Phthalate plasticizers are used in the production of our floors. Six Degrees was the first in the industry to make this important change.

Chicago
CP421_C03



Technical

FEATURES

- Easy to Maintain
- Qualifies for LEED® Credits
- GREENGUARD Gold Certified
- Ceramic-Reinforced UV-Cured Finish
- Enhanced with EnviroSD™ Anti-Bacterial Agent
- Extremely Durable
- Excellent Indentation Resistance
- Excellent Chemical Resistance
- Excellent Slip Resistance
- 100% Recyclable



WARRANTY

- 20-Year Commercial Warranty

COMPASS™ PLANK SPECIFICATIONS

Nominal Dimensions: 6" x 48" x 3 mm plank
 Finish: Embossed 28 mil
 Quantity Per Carton: 18 planks (6" x 48")
 Sq. Ft. Per Carton: 36 sq. ft./carton

COMPASS™ TILE SPECIFICATIONS

Nominal Dimensions: 12" x 24" x 3 mm tile
 Finish: Embossed 28 mil
 Quantity Per Carton: 18 tiles (12" x 24")
 Sq. Ft. Per Carton: 36 sq. ft./carton

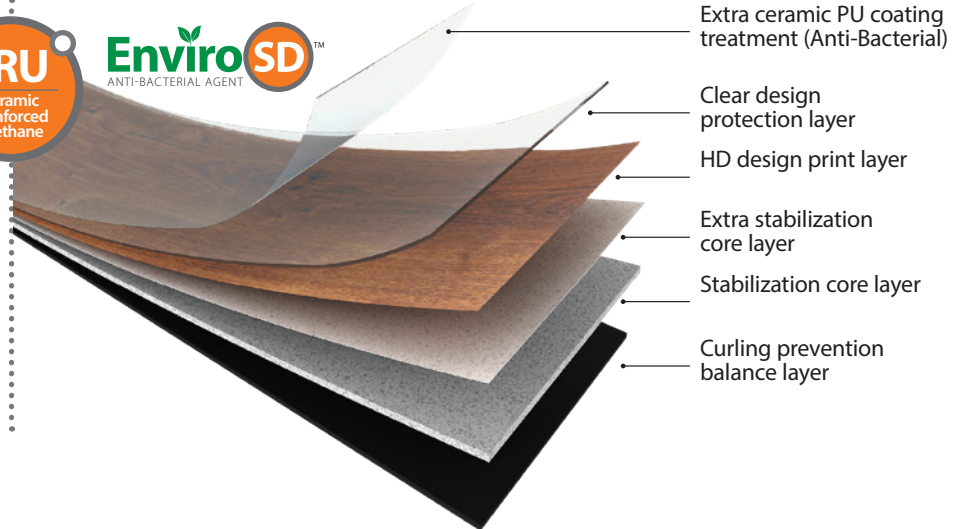
Nominal Dimensions: 18" x 18" x 3 mm tile
 Finish: Embossed 28 mil
 Quantity Per Carton: 16 tiles (18" x 18")
 Sq. Ft. Per Carton: 36 sq. ft./carton

TEST INFORMATION

- ASTM F 1700 – Solid Vinyl Tile: Class III, Type A& B
- ASTM E 648 – Critical Radiant Flux: Class I, >.45 W/cm²
- ASTM E 662 – Smoke Density: Pass
- ASTM D 2047 – Slip Resistance: > 0.60
- ASTM F 970 – Static Load Limit: 250 PSI, < .005" Indentation
- ASTM F 925 – Chemical Resistance: Excellent (chart available)
- ASTM F 1515 – Light Stability: Pass



Brooklyn
CP233_C91



For the most current and complete technical, installation and maintenance information, please visit sixdegreesflooring.com

Welcome to the exciting world of Six Degrees Flooring Surfaces™. When you select a floor from Six Degrees, you can rest assured you have selected one made from the highest quality, locally-sourced raw materials in a state of the art, family-owned factory, right here in the USA. Our products are both durable and beautiful, and we take great pride in providing our customers with the best possible service and care. Innovative production technology, superior wear and scratch resistance, and our commitment to both you, our customer, and the environment are what set us apart from the rest.

American made. American served. You're just a few steps away from *the high quality and high style of Six Degrees Flooring Surfaces.™*



St. Louis CP406_C10,
Charleston CP427_C02,
DC CT315_C04

Designer Inspired

Readily Available

Highly Durable

Low Maintenance

Eco Friendly

Easy Installation

you're just a few steps away



six degrees
FLOORING SURFACES™

931 South Springville Avenue • Fostoria, Ohio 44830

844-432-5885

sixdegreesflooring.com

