

# Compass Colors™

VINYL FLOORING



**six degrees**  
FLOORING SURFACES™



Des Moines CT205\_C31,  
Boise CT205\_C34



Des Moines CT205\_C31,  
San Antonio CT205\_C38,  
Tulsa CT205\_C35

Des Moines CT205\_C31,  
Green Bay CT205\_C33,  
Boise CT205\_C34,  
Orlando CT205\_C26,  
Knoxville CT205\_C24,  
Cincinnati CT205\_C27,  
Baton Rouge CT205\_C36

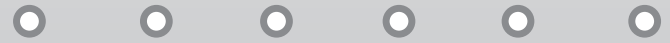


## Compass Colors™

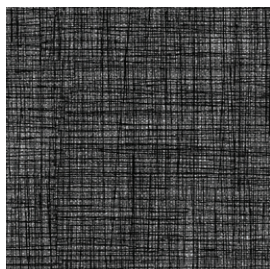
VINYL FLOORING

Where will your design direction take you? Somewhere bold, bright and colorful? Then let the Compass Colors™ Collection lead the way. With 15 new beautiful colors, our Compass Colors™ Collection is great for schools, pediatrics, corporate... anywhere you want your floors to stand out or add a splash of color. Best of all, they're made here in the USA. It's a big world out there... we're here to help you make it more colorful. The Compass Colors™ Collection ... ***A Colorful Solution for Flooring Needs.***

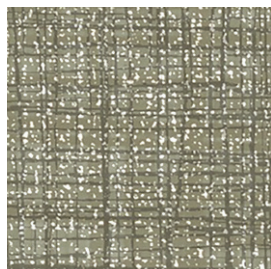
you're just a few steps away



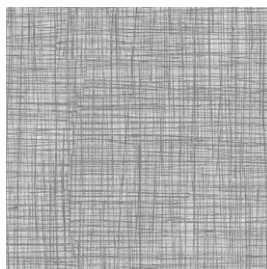
# Compass Colors™ Tiles • 12" x 24"



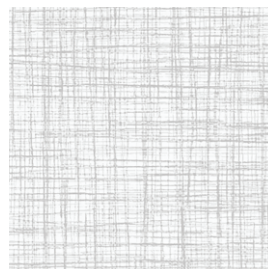
CT205\_C38 San Antonio



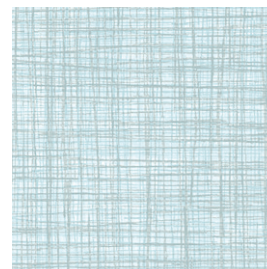
CT205\_C08 Pittsburgh



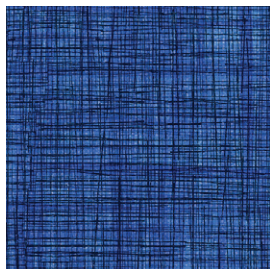
CT205\_C31 Des Moines



CT205\_C23 Vegas



CT205\_C25 Charlotte



CT205\_C34 Boise



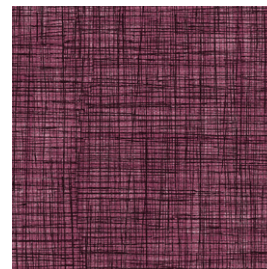
CT205\_C28 Atlanta



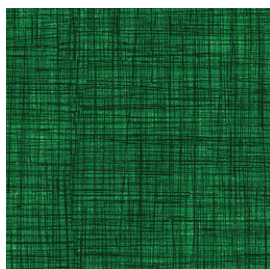
CT205\_C37 Memphis



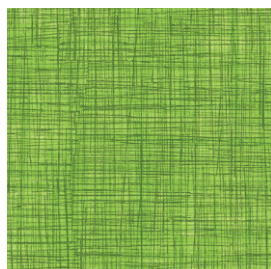
CT205\_C36 Baton Rouge



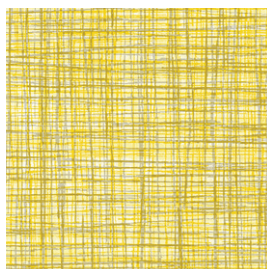
CT205\_C35 Tulsa



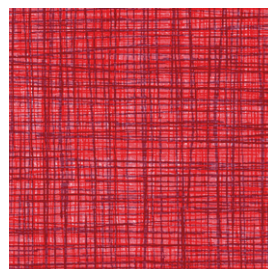
CT205\_C33 Green Bay



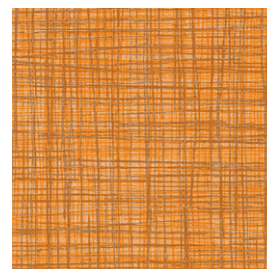
CT205\_C32 San Diego



CT205\_C26 Orlando



CT205\_C27 Cincinnati



CT205\_C24 Knoxville

## Technical

### FEATURES

- Easy to Maintain
- Qualifies for LEED® Credits
- FloorScore® Certified
- Ceramic-Reinforced UV-Cured Finish
- Enhanced with EnviroSDTM Anti-Bacterial Agent
- Extremely Durable
- Excellent Indentation Resistance
- Excellent Chemical Resistance
- Excellent Slip Resistance
- 100% Recyclable



CERTIFIED BY  
SCS GLOBAL SERVICES



### WARRANTY

- 20-Year Commercial Warranty

### COMPASS COLORS™ TILE SPECIFICATIONS

Nominal Dimensions: 12" x 24" x 3 mm tile

Finish: Embossed 28 mil

Quantity Per Carton: 18 tiles (12" x 24")

Sq. Ft. Per Carton: 36 sq. ft./carton

### TEST INFORMATION

ASTM F 1700 – Solid Vinyl Tile:

Class III, Type A & B

ASTM E 648 – Critical Radiant Flux:

Class I, >.45 W/cm<sup>2</sup>

ASTM E 662 – Smoke Density: Pass

ASTM D 2047 – Slip Resistance: > 0.60

ASTM F 970 – Static Load Limit: 250 PSI,  
< .005" Indentation

ASTM F 925 – Chemical Resistance:

Excellent (chart available)

ASTM F 1515 – Light Stability: Pass



**six degrees**

FLOORING SURFACES™

931 South Springville Avenue • Fostoria, Ohio 44830

**844-432-5885**

For the most current and complete technical, installation and maintenance information, please visit [sixdegreesflooring.com](http://sixdegreesflooring.com)

